



B.D.D., Inc.

Panel Track

Retail Price List

Effective September 1, 2017

Product Index

Panel Track Product Information	Page 2
Pattern Listing	Page 3-4
Panel Pricing	Page 5-7
Track Pricing	Page 8
Terms, Conditions and Warranty	Page 9

Panel Track by B.D.D., Inc.

Specifications

- *White Track, with 2, 3, 4 or 5 Channels
- *Wall or Ceiling Mount Brackets
- *Cord, White, approximately 3/4 the height of the blind
- *White Aluminum Wand is optional, wand is approximately 1/2 the height of blind, maximum length 60"
- *Fabric panels are attached to the carriers with white Velcro, that is sewn on to the panels
- *Panel overlap is approximately 3"
- *Free floating panels available
- *Maximum panel length is 144"
- *Minimum panel width is 20", maximum panel width is 42"
- *Powder Coated Track is available for a surcharge of \$6 per foot*, minimum \$50* charge per track (track only, carriers and end caps cannot be powder coated) *Net pricing, no discount

Hem Bar

Internal Hem Bar

- *Internal hem bar standard for all Sonoran Panel Tracks
- *Folded and welded hem bar pocket

External Hem Bar

- *External hem bar is the standard hem bar for High Living and Seasons Panel Track Panels.
- *Available in 2 colors- White, Black
- *External hem bar is made of aluminum with plastic end caps
- *Front of Hem Bar is Wrapped with Fabric

Measuring Instructions

Inside Mount

*When ordered as inside mount, a 1/4" deduction will be taken on the order width. The height measurement from top of track to bottom of panel will measure 1/2" less than order height.

Outside Mount

*When ordered as outside mount, no deduction will be taken on the order width. The height measurement from top of track to bottom of panel will measure the same as order height.

How to Determine Approximate Width of Panels

*To determine approximate width of panels please use the following formula:

$$(width\ of\ track\ +\ total\ amount\ of\ overlap) / number\ of\ panels = approximate\ panel\ width$$

$$total\ amount\ of\ overlap = (number\ of\ panels - 1) \times 3"$$

For example for a One Way Track, 120" wide with 4 panels

$$(120" + 9") / 4 = 32\ 1/4"$$

How to Price a Panel Track

- *First determine price of track based on size, draw and number of channels
- *Using formula above calculate the panel width to be used for your panel track
- *Multiply # of panels by the panel price, then add the track price, see example below:

For a 114" x 84" one way 4 channel track with 4 panels in M Screen 5%

Track Price is \$413

Approximate panel width (114" + 9") / 4 = 30 3/4" wide panels, \$134 per panel

(4 panels x \$134 each) + \$413 track price = \$949

Panel Track by B.D.D., Inc.

Sonoran Pattern Listing

Pattern	Price Group	Translucency	Pattern	Price Group	Translucency
3000 1%	A	1%	Ibiza	C	Semi-Translucent
3000 3%	A	3%	Linen	B	Semi-Translucent
3000 5%	A	5%	M Screen 3%	C	3%
3000 10%	A	10%	M Screen 5%	C	5%
3000 Blackout	E	Blackout	M Screen Deco 5%	C	5%
650	E	3%	Meridian BO	B	Blackout
Amalfi	C	Semi-Translucent	Pinpoint Blackout	A	Blackout
Avila FR	E	Blackout	S Screen	D	4%
Balmoral BO	E	Blackout	Samoa BO	E	Blackout
Balmoral LF	D	Semi-Translucent	Seada BO	C	Blackout
Bamboo	D	Semi-Translucent	Sienna	E	10%
E Screen 1%	D	1%	Silk Romance	F	Semi-Translucent
E Screen 10%	B	10%	Singular BO	D	Blackout
E Screen 3%	C	3%	South Beach	B	Semi-Translucent
E Screen 5%	C	5%	Stucco	C	8%

High Living Pattern Listing

Pattern	Price Group	Translucency	Pattern	Price Group	Translucency
310 Calico	H4	10%	Formentera	H3	Translucent
310 Silver	H4	10%	Ibiza	H2	Semi-Translucent
Alesia	H3	Translucent	Linen	H1	Semi-Translucent
Bachata	H2	Translucent	Mambo	H4	Semi-Translucent
Bachata Blackout	H4	Blackout	Mambo Blackout	H4	Blackout
Bamboo	H3	Semi-Translucent	Mistral	H1	Translucent
Bamboo Bright	H5	Semi-Translucent	Oda	H5	Translucent
Bliss	H5	Translucent	Samba	H4	Translucent
Bossa Nova	H2	Translucent	Samba Blackout	H3	Blackout
Carolina	H3	Translucent	Samoa Blackout	H3	Blackout
Claque	H2	Semi-Translucent	Sienna	H4	10%
Constellation	H5	7-9%	Silk Romance	H5	Semi-Translucent
Cumbia	H4	Semi-Translucent	Sonata	H5	Translucent
Cumbia Blackout	H4	Blackout	Touareg	H3	Semi-Translucent
Ensenada	H5	10%			

Panel Track by B.D.D., Inc.

Seasons Pattern Listing

Pattern	Price Group	Translucency	Pattern	Price Group	Translucency
Aura	S1	Translucent	Louvoscreen 5%	S2	5% Openness
Ayana	S2	Translucent/Semi Translucent	Madrid SPC	S1	Semi Translucent
Bali	S3	Semi Translucent	Maine Blackout	S3	Blackout
Banbury	S2	Semi Translucent	Mineral	S2	Semi Translucent
Basix	S1	Translucent	Monterey	S2	Semi Translucent
Basix Blackout	S2	Blackout	Newport	S3	Semi Translucent
Carnival	S3	Semi Translucent	Night Night Blackout	S3	Blackout
Chatsworth	S2	Translucent	Open Linen	S2	Translucent
Collina Blackout	S4	Blackout	Oslo	S2	Semi Translucent
Colourtex	S1	Semi Translucent	Regency SPC	S2	Semi Translucent
Contex SPC	S2	Semi Translucent	Ritz	S2	Semi Translucent
Coral	S2	Translucent/Semi Translucent	Strata SPC	S3	Semi Translucent
Daybreak	S2	Semi Translucent	Vermont	S2	Semi Translucent
Flutter	S1	Translucent	Voile	S1	Translucent
Hampton	S2	Semi Translucent	Whisper	S1	Semi Translucent
Harmony	S2	Semi Translucent	Woodland	S1	Semi Translucent
Helsinki	S3	Semi Translucent	Zadie	S2	Semi Translucent
Linen	S2	Semi Translucent	Zeta	S2	Translucent/Semi Translucent
Louvoscreen 3%	S2	3% Openness			

Sonoran Panel Track by B.D.D., Inc.

Sonoran Panel Pricing

PRICE GROUP A
3000 1%, 3%, 5%, 10%,
Pinpoint BO

		WIDTH TO				
		22"	27"	32"	37"	42"
HEIGHT	60"	51	56	62	67	73
	72"	54	61	67	74	80
	84"	58	65	73	80	87
	96"	62	70	78	86	94
	120"	70	79	89	99	109
	144"	77	89	100	112	123

PRICE GROUP B
E Screen 10%, Linen,
Meridian BO, South Beach

		WIDTH TO				
		22"	27"	32"	37"	42"
HEIGHT	60"	72	83	93	104	114
	72"	80	92	105	117	129
	84"	88	102	116	130	144
	96"	96	112	128	144	160
	120"	112	132	151	171	190
	144"	128	151	174	197	220

PRICE GROUP C
Amalfi, E Screen 3%/5%, Ibiza,
M Screen 3%/5%, M Deco 5%,
Seada BO, Stucco

		WIDTH TO				
		22"	27"	32"	37"	42"
HEIGHT	60"	81	94	106	119	131
	72"	91	106	120	135	150
	84"	101	118	134	151	168
	96"	110	130	149	168	187
	120"	130	153	177	200	224
	144"	149	177	205	233	261

PRICE GROUP D
Balmoral LF, Bamboo, E Screen
1%, S Screen, Singular BO

		WIDTH TO				
		22"	27"	32"	37"	42"
HEIGHT	60"	90	104	119	133	148
	72"	101	118	135	152	169
	84"	113	132	152	171	191
	96"	124	146	168	191	213
	120"	147	174	201	229	256
	144"	170	202	235	267	300

PRICE GROUP E
3000 BO, 650, Avila FR,
Balmoral BO, Samoa BO,
Sienna

		WIDTH TO				
		22"	27"	32"	37"	42"
HEIGHT	60"	98	114	130	147	163
	72"	111	130	149	168	188
	84"	124	146	168	190	212
	96"	137	162	187	212	237
	120"	163	194	224	255	286
	144"	188	225	262	299	336

PRICE GROUP F
Silk Romance

		WIDTH TO				
		22"	27"	32"	37"	42"
HEIGHT	60"	98	114	130	147	163
	72"	111	130	149	168	188
	84"	124	146	168	190	212
	96"	137	162	187	212	237
	120"	163	194	224	255	286
	144"	188	225	262	299	336

Pricing on this page is per panel.

To determine the number of panels needed, please see page 2.

*Minimum panel width is 20"

*Maximum panel width is 42"

*Minimum panel length is 12"

*Maximum panel length is 144"

B.D.D., Inc. 2017

High Living Panel Track by B.D.D., Inc.

High Living Panel Pricing

H1 Linen, Mistral

		WIDTH TO				
		22"	27"	32"	37"	42"
H E I G H T T O	60"	81	93	106	118	130
	72"	89	103	117	131	144
	84"	96	112	127	143	159
	96"	104	121	138	156	173
	120"	119	140	160	181	202
	144"	134	158	182	206	231

H2 Bachata, Bossa Nova, Claque, Ibiza

		WIDTH TO				
		22"	27"	32"	37"	42"
H E I G H T T O	60"	89	103	117	131	145
	72"	97	113	128	144	160
	84"	105	123	140	158	175
	96"	113	132	152	171	191
	120"	129	152	175	198	222
	144"	145	172	199	225	252

H3 Alesia, Bamboo, Carolina, Formentera, Samba BO, Samoa BO, Touareg

		WIDTH TO				
		22"	27"	32"	37"	42"
H E I G H T T O	60"	99	115	132	148	164
	72"	109	128	146	165	183
	84"	119	140	161	182	202
	96"	129	152	175	198	222
	120"	149	177	204	232	260
	144"	169	201	234	266	298

H4 310 Calico, 310 Silver, Bachata BO, Cumbia, Cumbia BO, Mambo, Mambo BO, Samba, Sienna

		WIDTH TO				
		22"	27"	32"	37"	42"
H E I G H T T O	60"	106	123	141	159	177
	72"	117	137	158	178	198
	84"	128	151	174	197	220
	96"	139	165	190	216	241
	120"	162	193	223	254	284
	144"	185	220	256	292	327

H5 Bamboo Bright, Bliss, Constellation, Ensenada, Oda, Silk Romance, Sonata

		WIDTH TO				
		22"	27"	32"	37"	42"
H E I G H T T O	60"	118	138	159	179	200
	72"	131	155	179	202	226
	84"	145	172	199	225	252
	96"	159	189	218	248	278
	120"	186	222	258	294	330
	144"	213	256	298	340	382

Pricing on this page is per panel.

To determine the number of panels needed, please see page 2.

- *Minimum panel width is 20"
- *Maximum panel width is 42"
- *Minimum panel length is 12"
- *Maximum panel length is 144"

Seasons Panel Track by B.D.D., Inc.

Seasons Panel Pricing

PRICE GROUP **S1** Aura, Basix, Colourtex, Flutter, Madrid SPC, Voile, Whisper, Woodland

		WIDTH TO				
		22"	27"	32"	37"	42"
HEIGHT	60"	78	90	102	114	127
	72"	87	102	116	131	145
	84"	97	113	130	147	163
	96"	106	125	144	163	182
	120"	126	149	172	195	218
	144"	145	172	200	227	255

PRICE GROUP **S2** Ayana, Banbury, Basix BO, Chatsworth, Contex SPC, Coral, Daybreak, Hampton, Harmony, Linen, Louvoscreen 3%/5%, Mineral, Monterey, Open Linen, Oslo, Regency SPC, Ritz, Vermont, Zadie, Zeta

		WIDTH TO				
		22"	27"	32"	37"	42"
HEIGHT	60"	101	119	137	155	172
	72"	115	137	158	179	200
	84"	130	154	179	203	227
	96"	144	172	199	227	255
	120"	173	207	241	275	310
	144"	202	242	283	324	364

PRICE GROUP **S3** Bali, Carnival, Helsinki, Maine BO, Newport, Night Night BO, Strata SPC

		WIDTH TO				
		22"	27"	32"	37"	42"
HEIGHT	60"	141	168	195	222	249
	72"	163	195	227	259	291
	84"	186	223	260	297	334
	96"	208	250	292	334	376
	120"	252	304	356	408	460
	144"	296	358	421	483	545

PRICE GROUP **S4** Collina BO

		WIDTH TO				
		22"	27"	32"	37"	42"
HEIGHT	60"	164	196	228	260	293
	72"	191	229	267	305	343
	84"	217	261	306	350	394
	96"	244	294	344	394	445
	120"	297	359	421	484	546
	144"	350	424	499	573	648

Pricing on this page is per panel.

To determine the number of panels needed, please see page 2.

*Minimum panel width is 20"

*Maximum panel width is 42"

*Minimum panel length is 12"

*Maximum panel length is 144"

Panel Track by B.D.D., Inc.

Track Pricing

One Way Draw

2 Channel Track **Track Width up to**

36"	48"	60"	72"	78"
198	221	242	264	285

2 Panels



3 Channel Track **Track Width up to**

48"	60"	72"	84"	96"	108"	120"
250	272	293	315	336	358	379

3 Panels



4 Channel Track **Track Width up to**

72"	84"	96"	108"	120"	132"	144"	159"
301	329	357	384	413	439	466	495

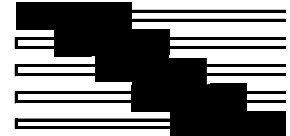
4 Panels



5 Channel Track **Track Width up to**

84"	96"	108"	120"	132"	144"	156"	168"	180"	198"
383	414	444	475	505	538	568	599	628	660

5 Panels



Center Open

2 Channel Track **Track Width up to**

72"	84"	96"	108"	120"	132"	144"	162"
286	309	331	355	378	401	423	446

4 Panels



3 Channel Track **Track Width up to**

96"	108"	120"	132"	144"	156"	168"	180"	192"	204"	216"	228"	240"
359	379	399	418	438	458	476	496	516	534	554	574	594

6 Panels



4 Channel Track **Track Width up to**

72"	84"	96"	108"	120"	132"	144"	162"
331	362	393	423	454	485	516	545

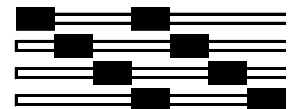
4 Panels



4 Channel Track **Track Width up to**

132"	144"	156"	168"	180"	192"	204"	216"	228"	240"
489	512	537	559	582	605	628	651	675	697

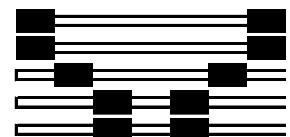
8 Panels



5 Channel Track **Track Width up to**

156"	168"	180"	192"	204"	216"	228"	240"
596	621	646	671	696	720	744	771

10 Panels



**Track pricing does not include panels.

Terms and Conditions

ORDER PROCESSING

Telephone Orders

Verbal orders are accepted as the dealer's responsibility. Each order will be repeated back by the Customer Service Representative. In certain instances, we may require written orders.

Changes and Cancellations

All products are custom-made to your specifications under tight deadlines. Once production has begun on your order, changes and cancellations cannot be made.

FREIGHT

Freight for custom blind orders, see BDD freight policy.

Shipments outside the continental U.S. are subject to freight charges. Chargeable parts and returns for repair are subject to freight charges.

CLAIMS AND RETURNS

Defective Merchandise

All manufacturing defects must be reported to Customer Service within 30 days of receipt of blinds. We may require the return of defective blinds prior to repair or replacement.

Returns for Repair

Prior to return for repair, contact Customer Service. We will request the order number, date, purchase order number, and type of product. Arrangements for return will be made at that time with directions as to how the blinds should be returned. The package should be marked for easy identification both inside and outside, and should contain a written confirmation of the verbal repair instructions. Repairs should be packaged carefully.

Product that has been mishandled or received in poor condition will be returned to the customer.

Chargebacks for unauthorized repairs or additional installation cannot be honored. All returns for repair are subject to freight charges.

Returns for Credit

Returns can be accepted only if prior authorization has been obtained from Customer Service. Authorization will include instructions as to how the merchandise

Freight Damage UPS/Fed EX

If freight damage is visible, refuse the shipment UPS/RPS will inspect the damage and return to the shipping location. Contact Customer Service for further information.

If freight damage is concealed, retain all packaging materials and contact Customer Service immediately.

Duplicated Orders

All orders are confirmed after entry into our system. Customer service is not responsible for duplicate orders caused by a written order following a telephone order or duplicate faxes.

Contract Orders

Advise Customer Service if you have a contract quote.

PRICING AND TERMS

All prices are subject to change without notice. Until credit is approved, terms are Cash With Order. Standard terms are Net 30 days from invoice date.

Incorrect Merchandise

If any part of your shipment was made incorrectly, please advise Customer Service immediately. A replacement will be made at no charge if the problem was due to B.D.D., Inc. error. If the problem was due to dealer or customer error, the original order and replacement order will be full charge.

Freight Damage Common Carrier (All Shipments FOB Shipping Point)

If freight damage is visible, refuse the shipment. The carrier will return the merchandise to the shipping location for inspection. Contact Customer Service for further information.

If freight damage is concealed, contact Customer Service immediately.

BDD, Inc. Statement of Warranty

Limited Lifetime Warranty

B.D.D., Inc. warrants to the original purchaser that the product purchased from B.D.D., Inc. is free from defect in material and workmanship under normal use and as long as the product remains in the original window. This warranty extends only to the original purchaser of the product.

Motors and motor components are warranted for a period of 5 years. Batteries and battery wands are exempt from this warranty. Fabrics are warranted for a period of 5 years.

This warranty shall not apply to any of the parts that have failed due to accident, negligence, alteration, misuse, abuse, improper handling, installation or maintenance, failure to follow instructions for operating or installing the product, loss of color intensity due to exposure of the sun over a long time, exposure to salt air, or normal wear and tear will also void this warranty.

B.D.D., Inc.'s obligation under this warranty shall be limited to the repair or exchange of any parts or components that may prove defective in normal use within the life of the blind. B.D.D., Inc. reserves the right to inspect any product or components prior to repair. In no event shall B.D.D., Inc. be liable for transportation costs to B.D.D., Inc. B.D.D., Inc. will not be liable for cost of removal or reinstallation of the product, or incidental damages.

To obtain service under this warranty, contact your retailer for replacement or return the product to the retailer. The original purchaser shall be responsible for the transportation cost of the product or replacement back to the original purchaser anywhere in the continental United States. No agent, representative dealer, or unauthorized employee of B.D.D., Inc. has the authority to increase or alter the obligation of this warranty. This warranty does not apply to contract orders.

*Written, online, or faxed orders are recommended (preferred) however, verbal orders are accepted as the dealer's responsibility.

B.D.D., Inc. 2017